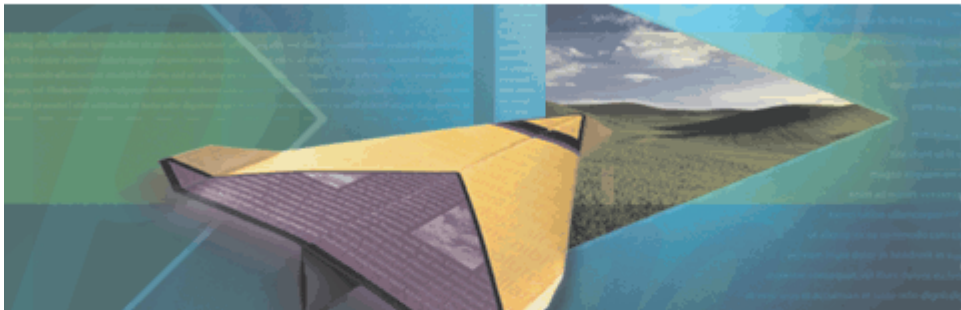


Adobe Pagemaker 7



Adobe® PageMaker® 7.0

IMPORTANT INFORMATION

Microsoft Windows.

If you already have Adobe Acrobat 5 installed please removed via the '*add/remove programs*' application in CONTROL PANELS. Install Pagemaker 7 and then re-install the 'Adobe Acrobat' portion of the Acrobat 5 installation process (select 'custom install' and just select 'Adobe Acrobat').

Apple Macintosh

No installation issues to date.

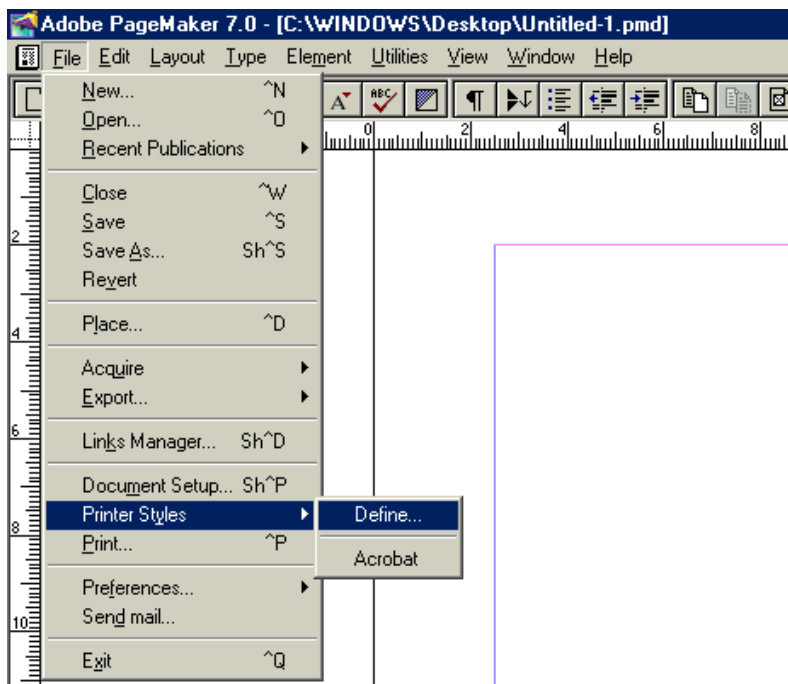
PLEASE NOTE

The configuration for 'Adobe Pagemaker 7' does involve 3 different areas:

1. DEFINING YOUR PRINT STYLE - this can be found in this chapter
2. DEFINING YOUR PRINT SET-UP - this can be found in the 'Adobe Pagemaker 6.5' chapter
3. DEFINING YOUR DISTILLER SET-UP - this can be found in the 'Acrobat 4/Acrobat 5' chapter - depending upon your software installation

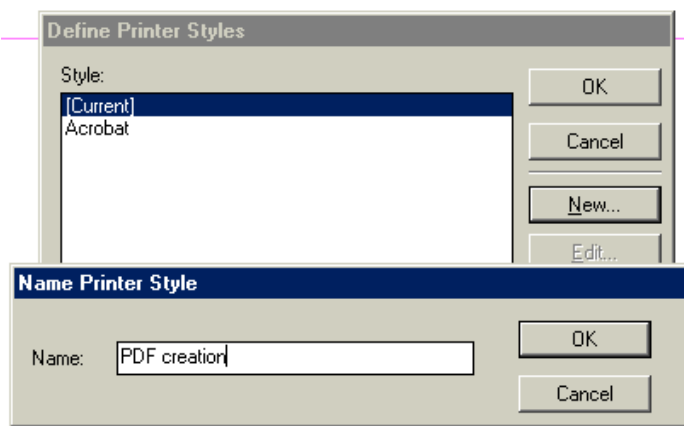
Step 1 - prepare your 'Print style'

To enable seamless PDF creation from Adobe Pagemaker 7, please configure your 'print style' to begin with.



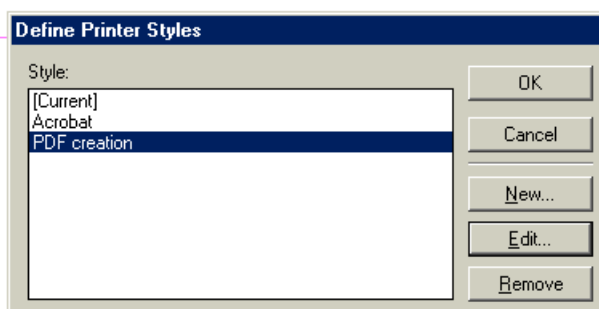
Step 2 - name your 'Print style'

In the 'define printer styles' menu, select NEW and then name your print style - call it 'PDF creation'



Step 3 - edit your NEW 'Print Style'

Once you have created your new style, select the EDIT button to configure



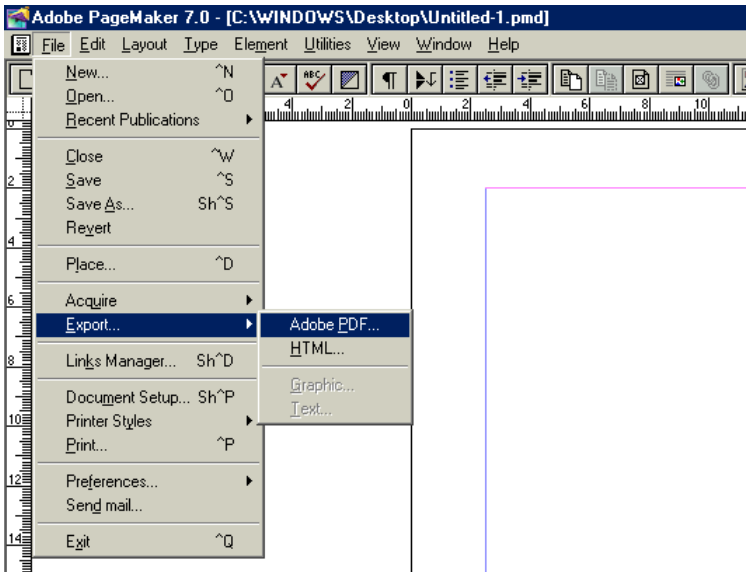
Step 4 - Configure your 'Print Style'

As previously mentioned, please refer to the 'Adobe Pagemaker 6.5' screen-shots on how to successfully set-up your print settings. Once these have been entered just select 'OK' for the settings to save within your 'Print Style' repository.

Now please continue to the new page for 'Export as Adobe PDF' settings

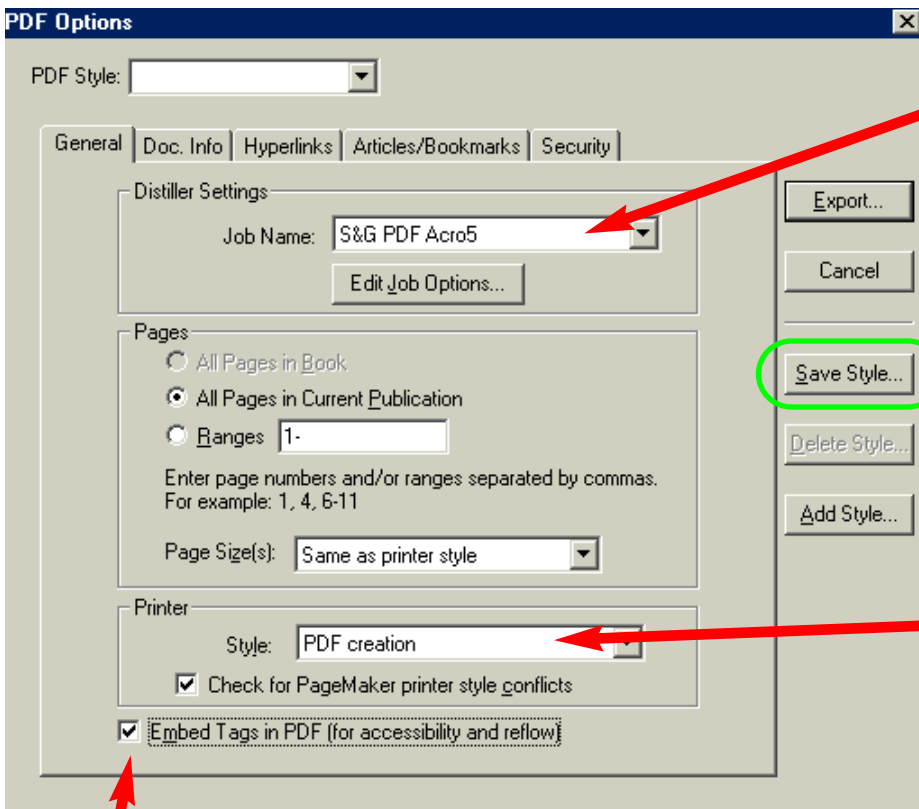
Step 1 - Begin your 'Export as Adobe PDF'

From the FILE menu, select EXPORT ... Adobe PDF. It is at this stage that if your document has not performed a 'final save' it will prompt you to do so. WINDOWS USERS - it is at this point which you might experience a problem - if so please call us.



Step 2 - Configure your 'PDF options'

Please configure your 'PDF Options' as outlined below:



As previously mentioned, your 'Distiller' settings must already be configured. Select the 'job settings' which you have already configured - in this instance we have chosen 'S&G PDF Acro5'. If you have not configured 'Distiller' you can use the 'Edit Job Options' to configure. Please refer to earlier chapters entitled 'Acrobat 4/Acrobat 5'.

The 'Print Style' which you have previously configured will be available in this 'drop down' menu - please select it.

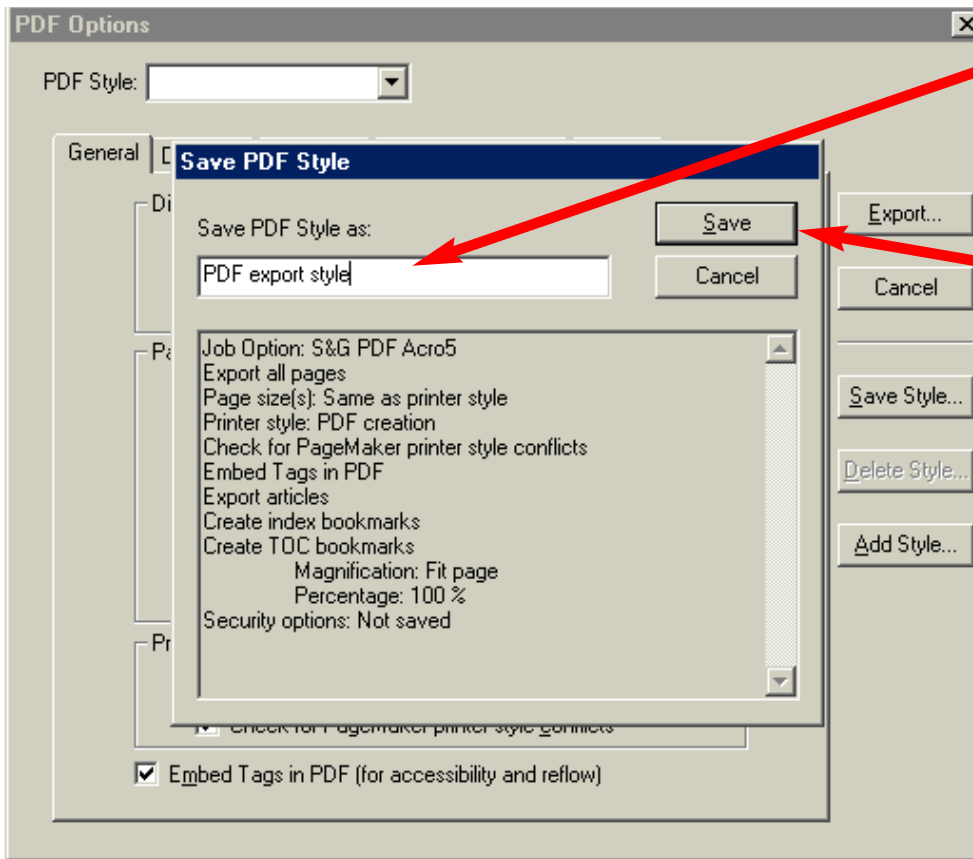
Make sure to select 'Embed tags in PDF for accessibility and reflow'. This will allow users of Palm devices to view your PDFs with automatic re-sizing/reflow.

IMPORTANT

Once you have entered the relevant details, please be sure to select 'Save Style' (as outlined in green). Please see the following page for further details

Step 3 - Save your 'PDF Style'

To ensure continuity of PDF creation we will now save your standard settings for all future PDF processing:



Type in your PDF export style (in this instance 'PDF export style')

Click on the SAVE button

Step 4 - Test your 'PDF Style'

Return to the FILE menu and select EXPORT ... Adobe PDF.

In you click into the 'drop down' menu you can select the 'PDF Style' which you have just created.

With this selected, all your previously configured selection have been remembered.

Select your page range etc., and select EXPORT.

YOUR PDF WILL NOW BE CREATED

There are numerous other functions available within the

Doc. Info

Hyperlinks

Articles/Bookmarks

Security

categories, but these do not relate to the Pre-Press environment.

If this is your first PDF test file, please send a 1-page PDF document to S&G to examine for suitability for CtP output.

